

# Particle Report

**Sample Name:** NU-LHT-1M 026 75-300um >100 pixels

**SOP Name:** NASA 2.5x10x Merged.vsop

**Edited:** True

**User Name:** apps

**Edited On:** 12 July 2007 10:08:19

**Date:** 11 July 2007 14:47:03

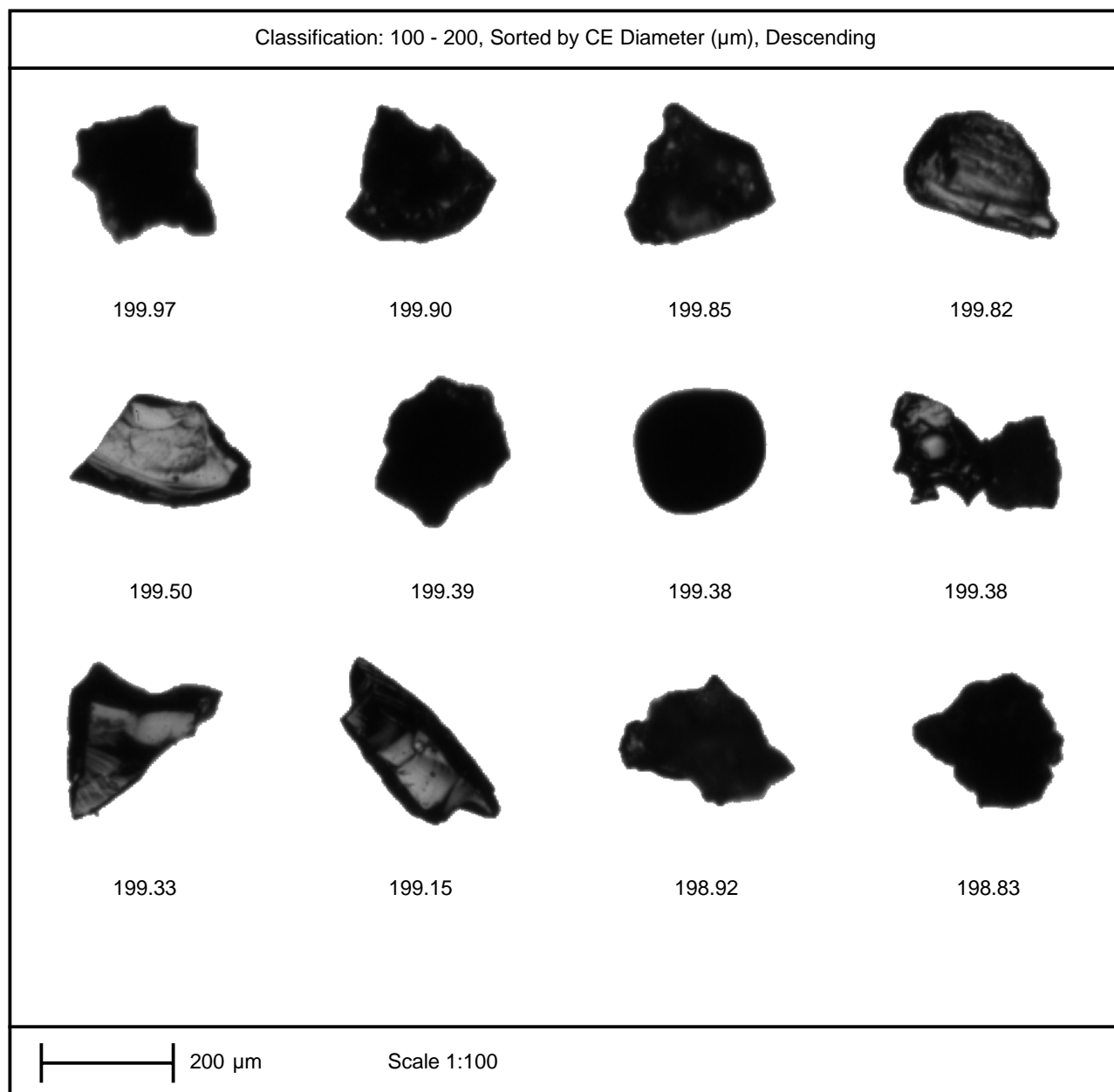
**SOP Analysis:** 3.0

**SOP Fill Holes:** True

**SOP Segmentation:** None

**SOP Trash Size:** 10

**SOP Optic(s) used:** 2.5x, 10x



**Comments:** 75 - 300um fraction dispersed at 3 Bar on SPD-1300  
2.5x and 10x objective scan

# Solidity Report - Number Distribution

**Sample Name:** NU-LHT-1M 026 75-300um >100 pixels

**SOP Name:** NASA 2.5x10x Merged.vsop

**Edited:** True

**User Name:** apps

**Edited On:** 12 July 2007 11:09:57

**Date:** 11 July 2007 14:47:03

**SOP Analysis:** 3.0

**SOP Fill Holes:** True

**SOP Segmentation:** None

**SOP Trash Size:** 10

**SOP Optic(s) used:** 2.5x, 10x

**Solidity Minimum:** 0.076

**Solidity D[n, 0.1]:** 0.902

**Solidity Maximum:** 1.000

**Solidity D[n, 0.5]:** 0.975

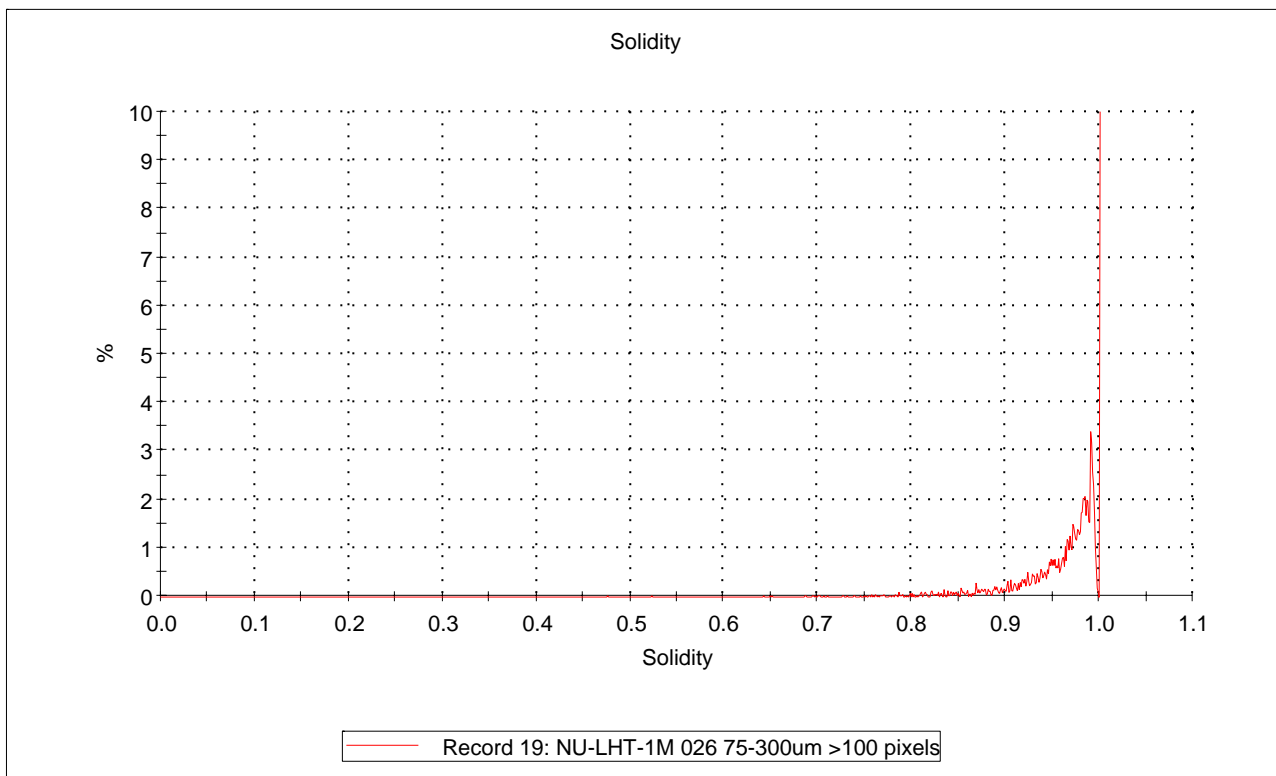
**Solidity Mean:** 0.959

**Solidity D[n, 0.9]:** 0.998

**Particles Counted:** 11080

**Solidity STDV:** 0.048

**Solidity RSD (%):** 5.01



**Comments:** 75 - 300um fraction dispersed at 3 Bar on SPD-1300  
2.5x and 10x objective scan

# HS Circularity Report - Number Distribution

**Sample Name:** NU-LHT-1M 026 75-300um >100 pixels

**SOP Name:** NASA 2.5x10x Merged.vsop

**Edited:** True

**User Name:** apps

**Edited On:** 12 July 2007 11:09:57

**Date:** 11 July 2007 14:47:03

**SOP Analysis:** 3.0

**SOP Fill Holes:** True

**SOP Segmentation:** None

**SOP Trash Size:** 10

**SOP Optic(s) used:** 2.5x, 10x

**HS Circularity Minimum:** 0.027

**HS Circularity D[n, 0.1]:** 0.547

**HS Circularity Maximum:** 0.990

**HS Circularity D[n, 0.5]:** 0.758

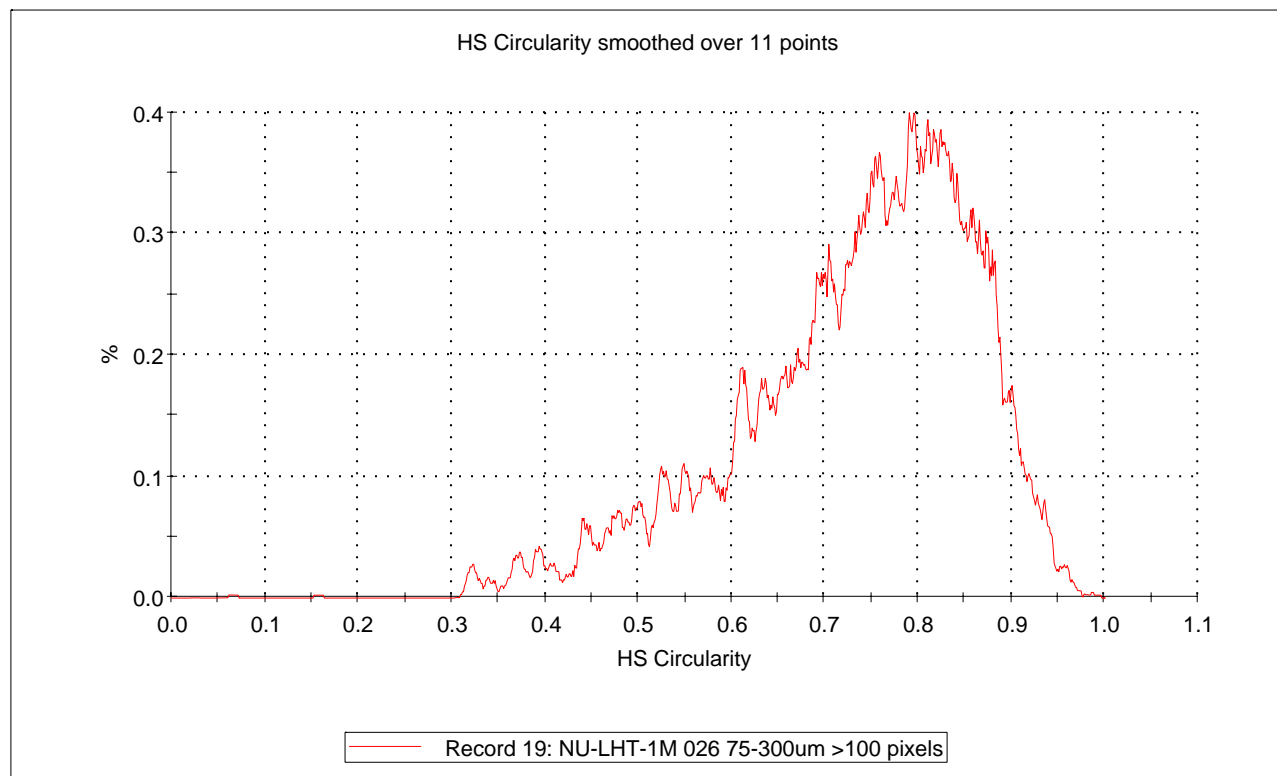
**HS Circularity Mean:** 0.734

**HS Circularity D[n, 0.9]:** 0.876

**Particles Counted:** 11080

**HS Circularity STDV:** 0.128

**HS Circularity RSD (%):** 17.468



**Comments:** 75 - 300um fraction dispersed at 3 Bar on SPD-1300  
2.5x and 10x objective scan

# Elongation Report - Number Distribution

**Sample Name:** NU-LHT-1M 026 75-300um >100 pixels

**SOP Name:** NASA 2.5x10x Merged.vsop

**Edited:** True

**User Name:** apps

**Edited On:** 12 July 2007 11:09:57

**Date:** 11 July 2007 14:47:03

**SOP Analysis:** 3.0

**SOP Fill Holes:** True

**SOP Segmentation:** None

**SOP Trash Size:** 10

**SOP Optic(s) used:** 2.5x, 10x

**Elongation Minimum:** 0.000

**Elongation D[n, 0.1]:** 0.146

**Elongation Maximum:** 0.840

**Elongation D[n, 0.5]:** 0.348

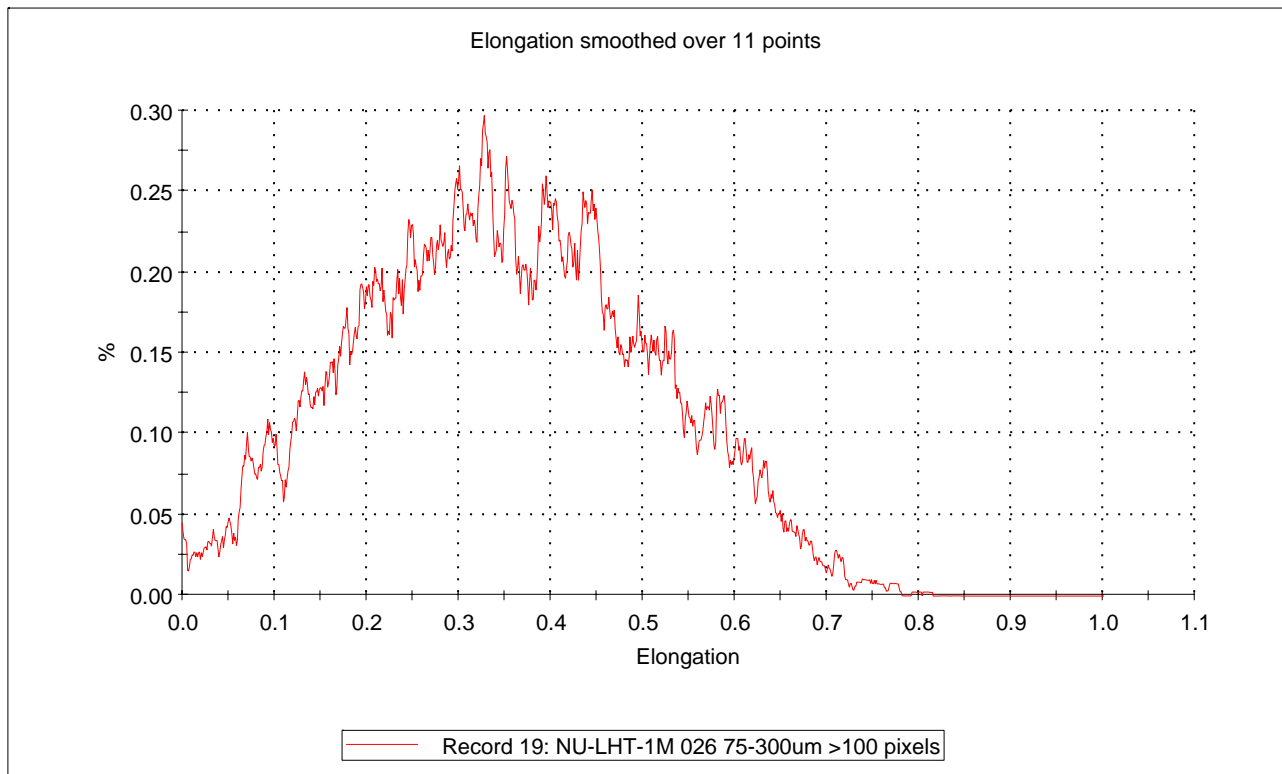
**Elongation Mean:** 0.352

**Elongation D[n, 0.9]:** 0.566

**Particles Counted:** 11080

**Elongation STDV:** 0.156

**Elongation RSD (%):** 44.34



**Comments:** 75 - 300um fraction dispersed at 3 Bar on SPD-1300  
2.5x and 10x objective scan

# Particle Report

**Sample Name:** NU-LHT-1M 026 75-300um >100 pixels

**SOP Name:** NASA 2.5x10x Merged.vsop

**Edited:** True

**User Name:** apps

**Edited On:** 12 July 2007 10:08:19

**Date:** 11 July 2007 14:47:03

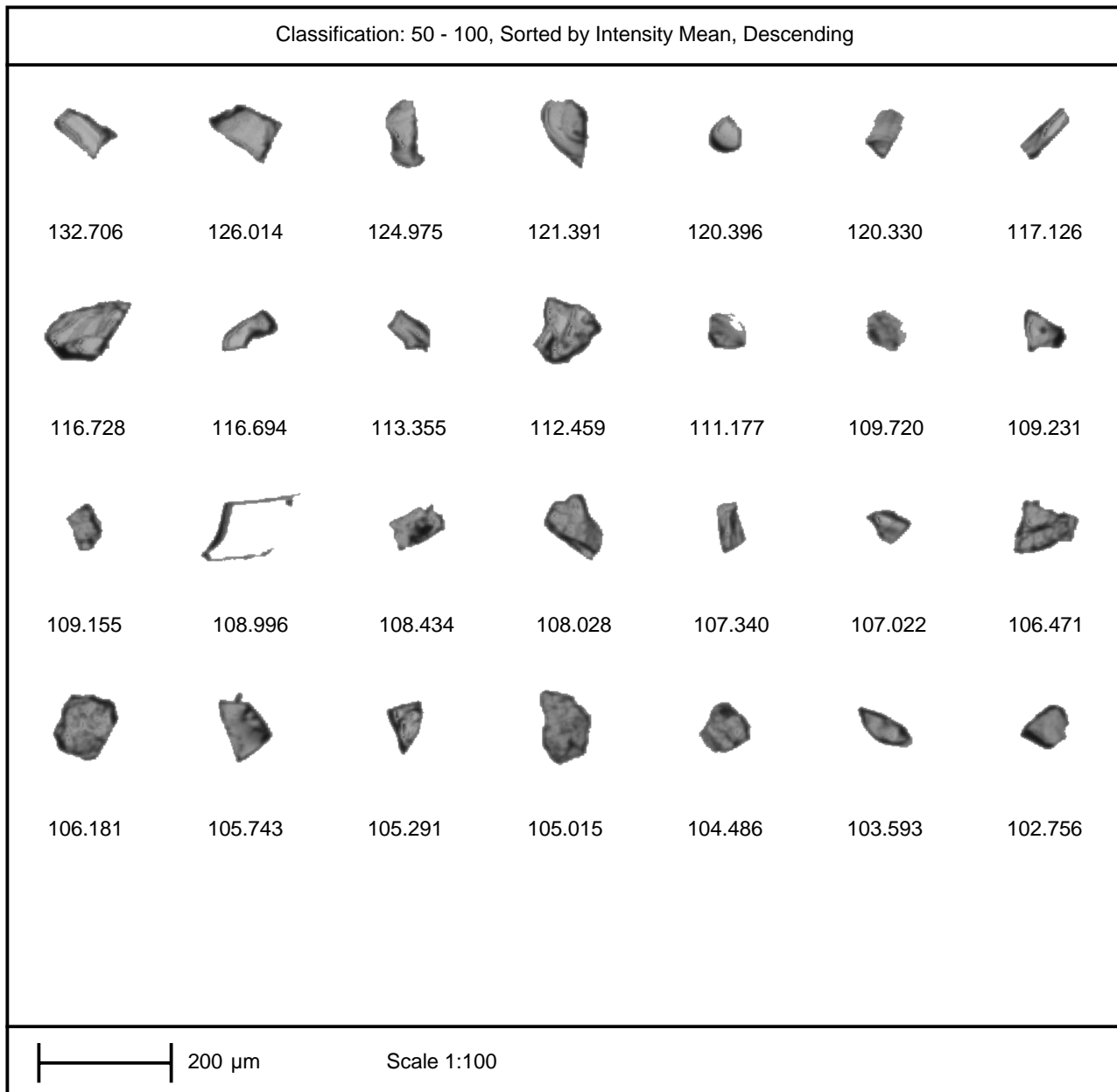
**SOP Analysis:** 3.0

**SOP Fill Holes:** True

**SOP Segmentation:** None

**SOP Trash Size:** 10

**SOP Optic(s) used:** 2.5x, 10x



**Comments:** 75 - 300um fraction dispersed at 3 Bar on SPD-1300  
2.5x and 10x objective scan

# Particle Report

**Sample Name:** NU-LHT-1M 026 75-300um >100 pixels

**SOP Name:** NASA 2.5x10x Merged.vsop

**Edited:** True

**User Name:** apps

**Edited On:** 12 July 2007 10:08:19

**Date:** 11 July 2007 14:47:03

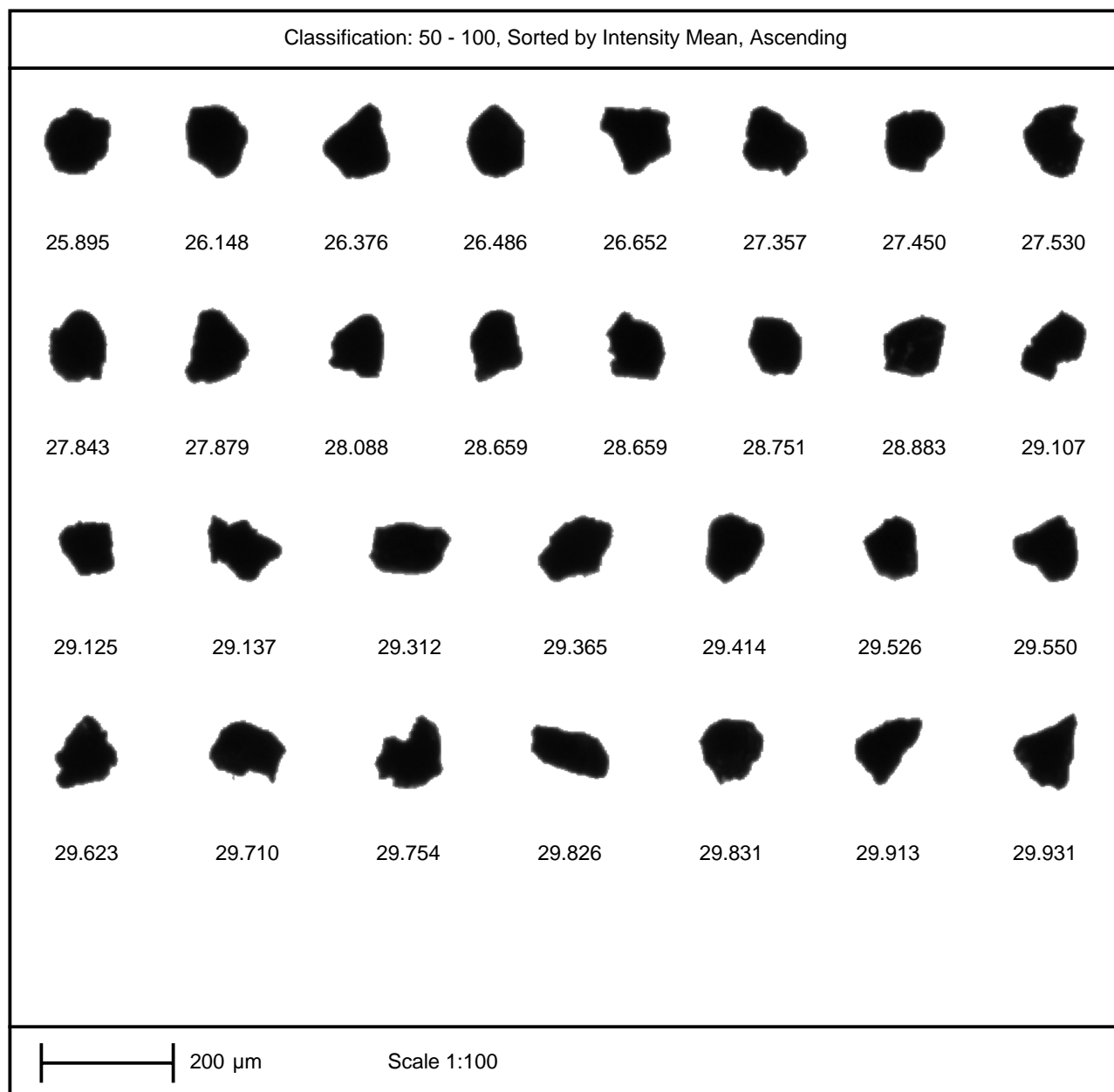
**SOP Analysis:** 3.0

**SOP Fill Holes:** True

**SOP Segmentation:** None

**SOP Trash Size:** 10

**SOP Optic(s) used:** 2.5x, 10x



**Comments:** 75 - 300um fraction dispersed at 3 Bar on SPD-1300  
2.5x and 10x objective scan

# Particle Report

**Sample Name:** NU-LHT-1M 026 75-300um >100 pixels

**SOP Name:** NASA 2.5x10x Merged.vsop

**Edited:** True

**User Name:** apps

**Edited On:** 12 July 2007 10:08:19

**Date:** 11 July 2007 14:47:03

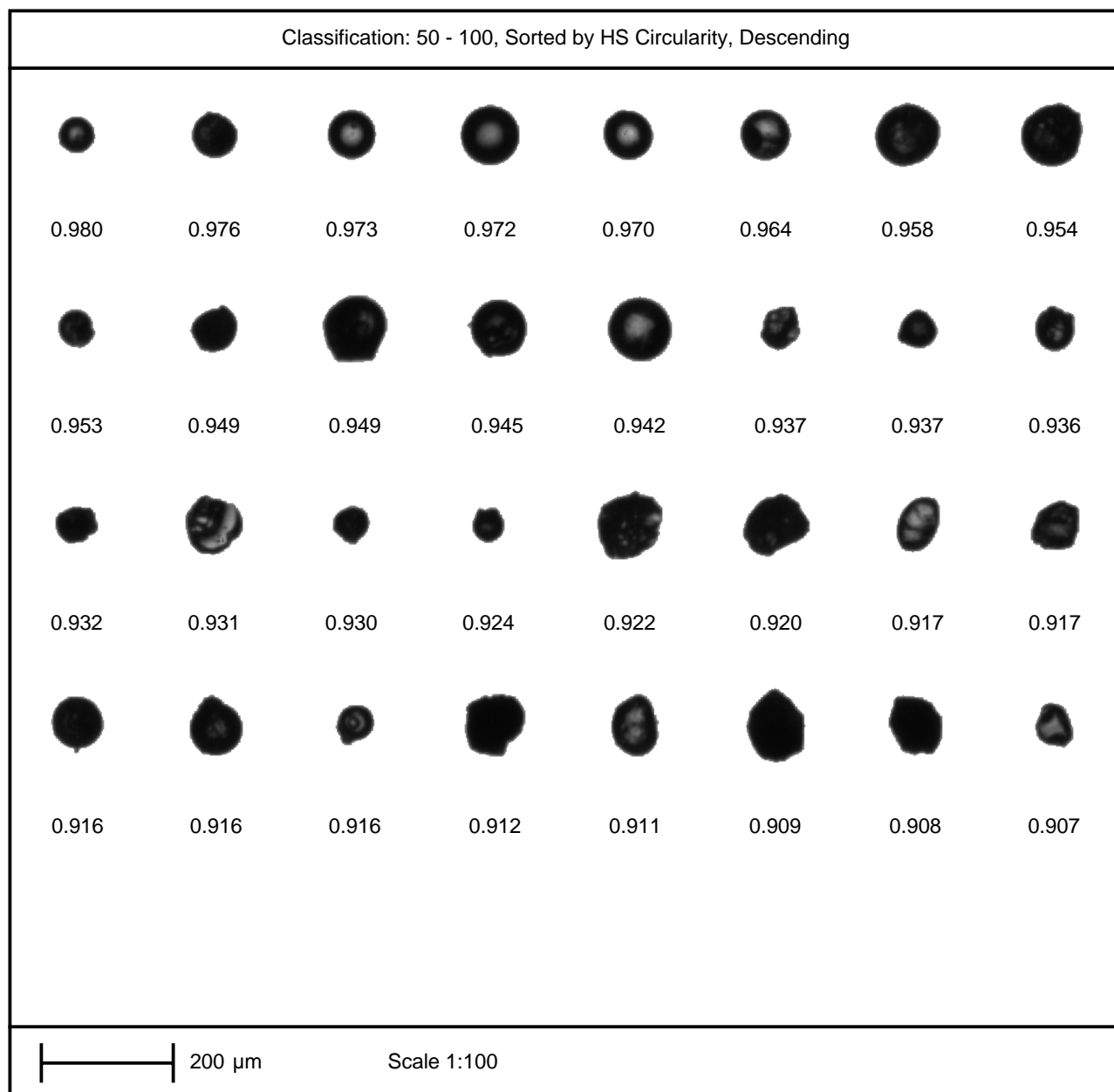
**SOP Analysis:** 3.0

**SOP Fill Holes:** True

**SOP Segmentation:** None

**SOP Trash Size:** 10

**SOP Optic(s) used:** 2.5x, 10x



**Comments:** 75 - 300um fraction dispersed at 3 Bar on SPD-1300  
2.5x and 10x objective scan

# Particle Report

**Sample Name:** NU-LHT-1M 026 75-300um >100 pixels

**SOP Name:** NASA 2.5x10x Merged.vsop

**Edited:** True

**User Name:** apps

**Edited On:** 12 July 2007 10:08:19

**Date:** 11 July 2007 14:47:03

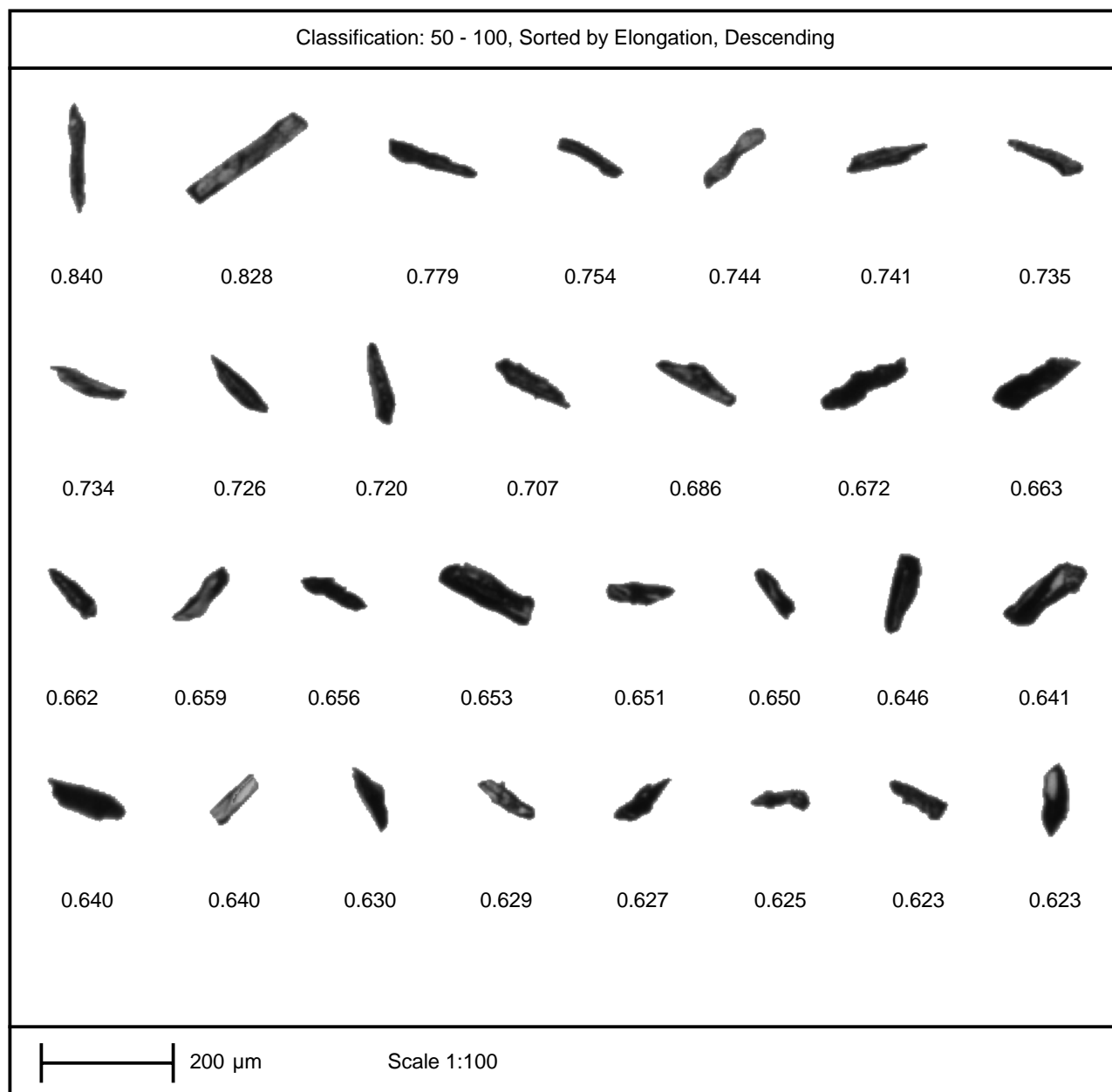
**SOP Analysis:** 3.0

**SOP Fill Holes:** True

**SOP Segmentation:** None

**SOP Trash Size:** 10

**SOP Optic(s) used:** 2.5x, 10x



**Comments:** 75 - 300um fraction dispersed at 3 Bar on SPD-1300  
2.5x and 10x objective scan



# Particle Report

**Sample Name:** NU-LHT-1M 026 75-300um >100 pixels

**SOP Name:** NASA 2.5x10x Merged.vsop

**Edited:** True

**User Name:** apps

**Edited On:** 12 July 2007 10:08:19

**Date:** 11 July 2007 14:47:03

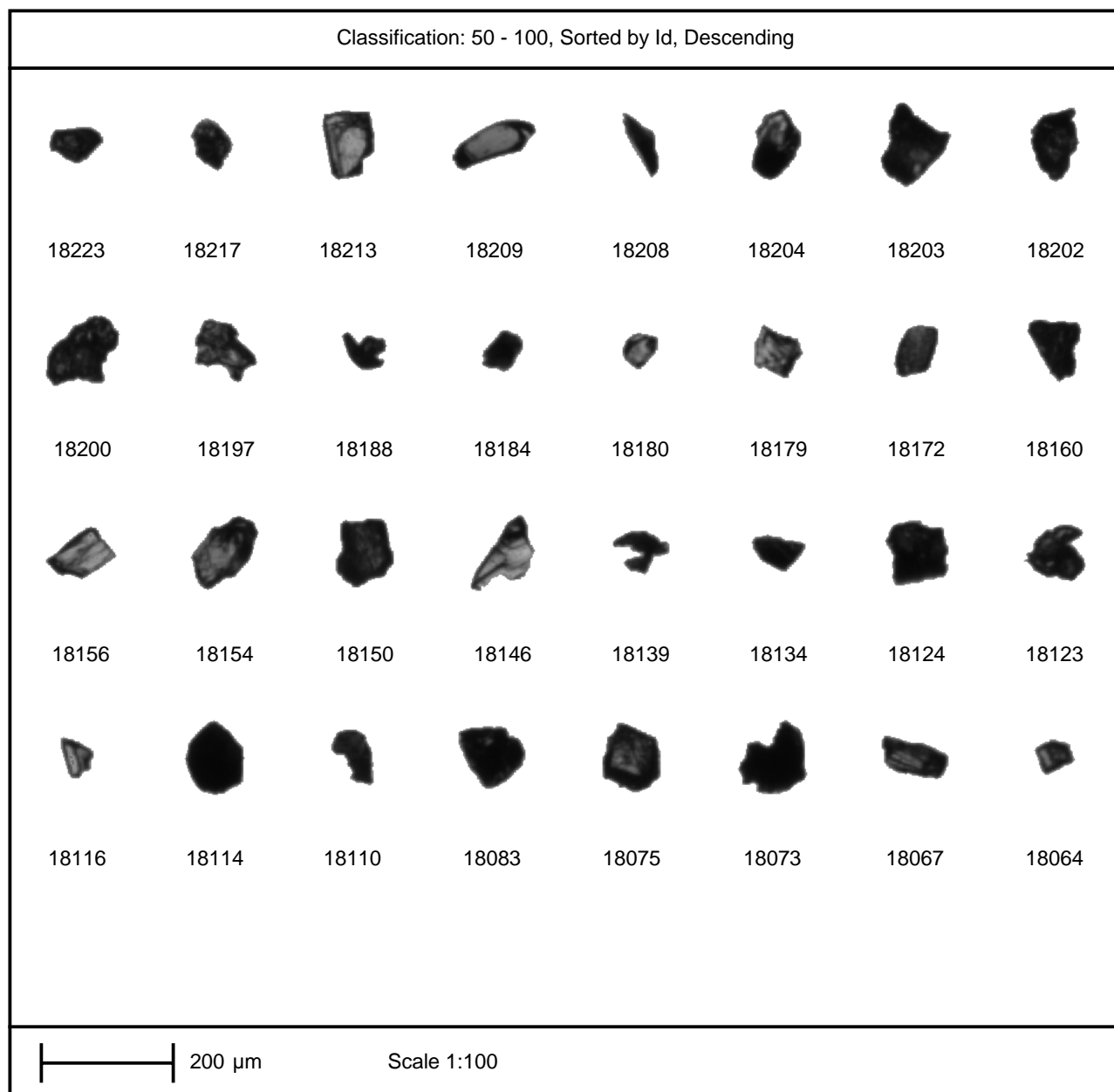
**SOP Analysis:** 3.0

**SOP Fill Holes:** True

**SOP Segmentation:** None

**SOP Trash Size:** 10

**SOP Optic(s) used:** 2.5x, 10x



**Comments:** 75 - 300um fraction dispersed at 3 Bar on SPD-1300  
2.5x and 10x objective scan

# Particle Report

Sample Name: NU-LHT-1M 026 75-300um >100 pixels

SOP Name: NASA 2.5x10x Merged.vsop

Edited: True

User Name: apps

Edited On: 12 July 2007 11:09:57

Date: 11 July 2007 14:47:03

SOP Analysis: 3.0

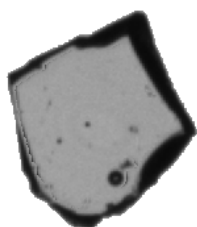
SOP Fill Holes: True

SOP Segmentation: None

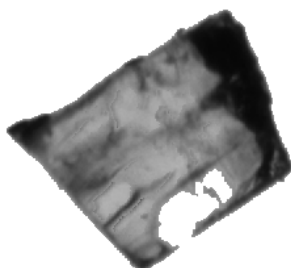
SOP Trash Size: 10

SOP Optic(s) used: 2.5x, 10x

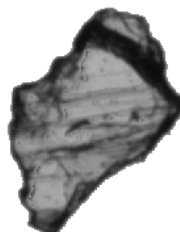
Classification: 200 - 400, Sorted by Intensity Mean, Descending



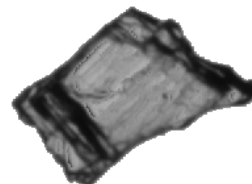
123.358



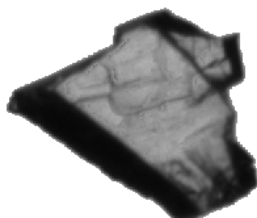
103.727



102.654



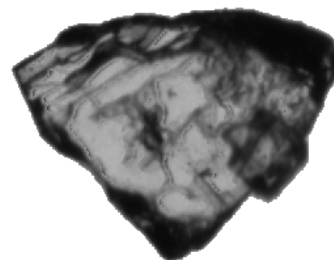
99.314



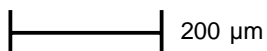
91.622



90.896



90.715



200  $\mu$ m

Scale 1:100

Comments: 75 - 300um fraction dispersed at 3 Bar on SPD-1300  
2.5x and 10x objective scan

# Particle Report

**Sample Name:** NU-LHT-1M 026 75-300um >100 pixels

**SOP Name:** NASA 2.5x10x Merged.vsop

**Edited:** True

**User Name:** apps

**Edited On:** 12 July 2007 11:09:57

**Date:** 11 July 2007 14:47:03

**SOP Analysis:** 3.0

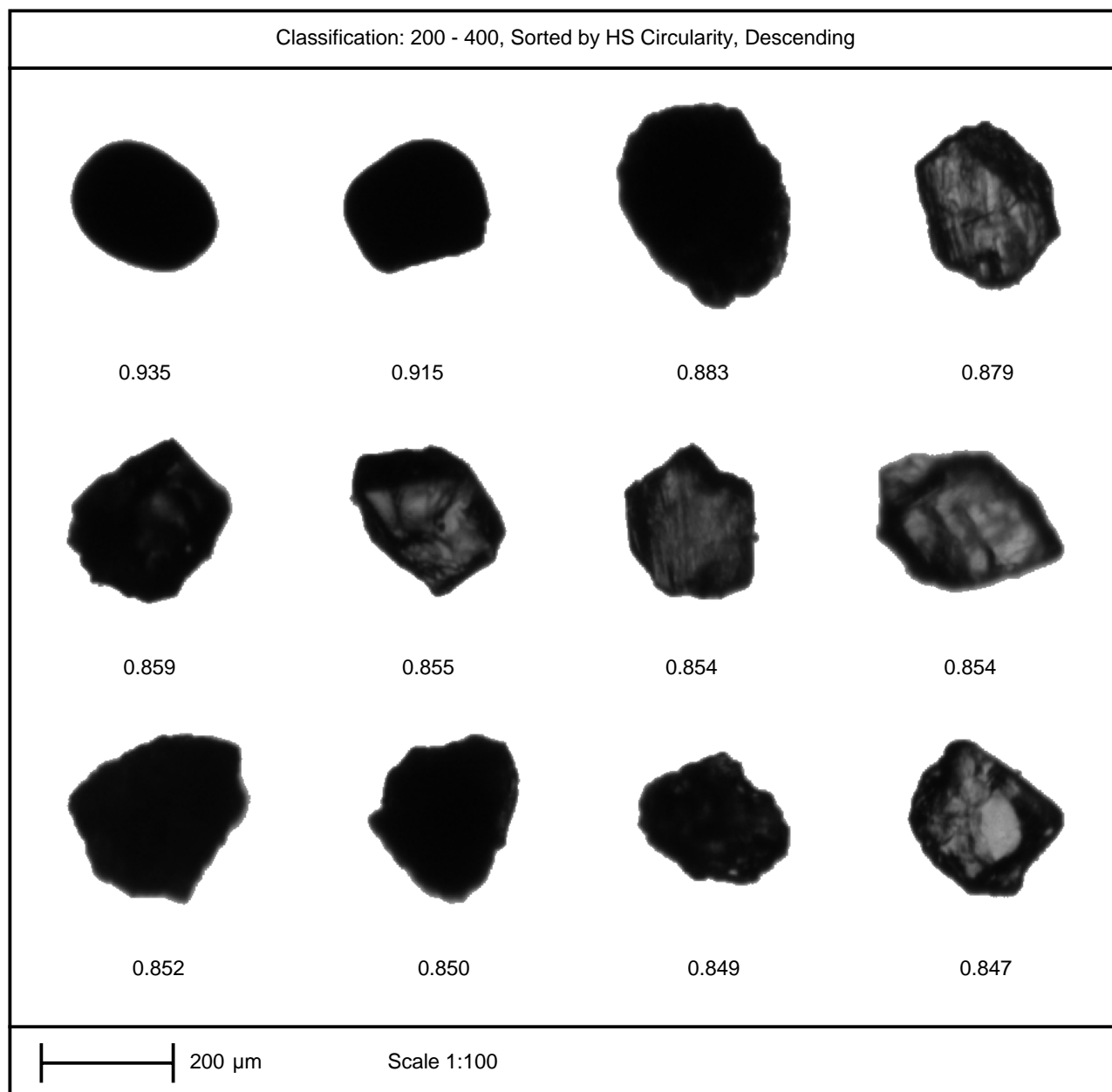
**SOP Fill Holes:** True

**SOP Segmentation:** None

**SOP Trash Size:** 10

**SOP Optic(s) used:** 2.5x, 10x

Classification: 200 - 400, Sorted by HS Circularity, Descending



**Comments:** 75 - 300um fraction dispersed at 3 Bar on SPD-1300  
2.5x and 10x objective scan

# Particle Report

Sample Name: NU-LHT-1M 026 75-300um >100 pixels

SOP Name: NASA 2.5x10x Merged.vsop

Edited: True

User Name: apps

Edited On: 12 July 2007 11:09:57

Date: 11 July 2007 14:47:03

SOP Analysis: 3.0

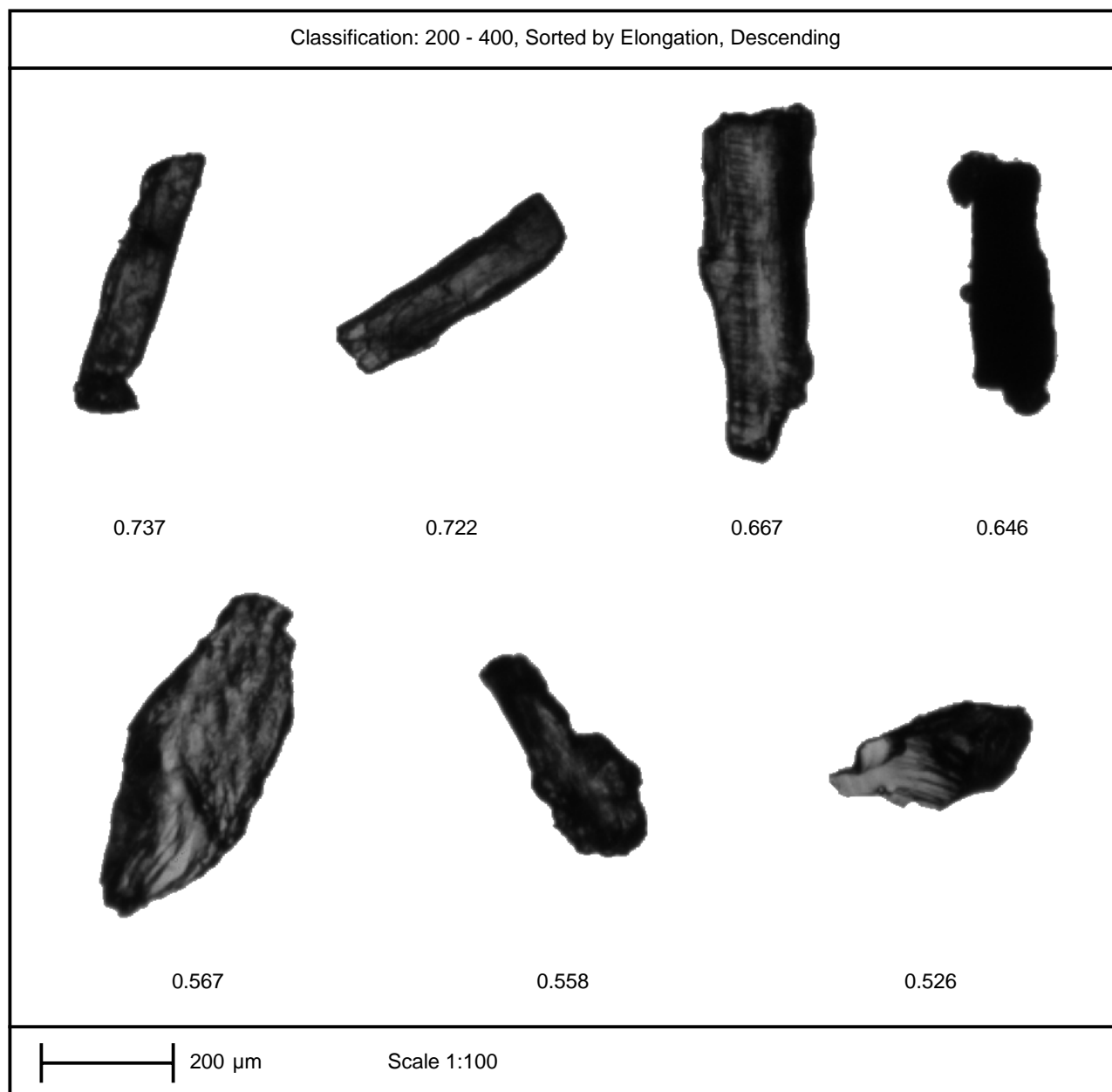
SOP Fill Holes: True

SOP Segmentation: None

SOP Trash Size: 10

SOP Optic(s) used: 2.5x, 10x

Classification: 200 - 400, Sorted by Elongation, Descending



Comments: 75 - 300um fraction dispersed at 3 Bar on SPD-1300  
2.5x and 10x objective scan

# Particle Report

Sample Name: NU-LHT-1M 026 75-300um >100 pixels

SOP Name: NASA 2.5x10x Merged.vsop

Edited: True

User Name: apps

Edited On: 12 July 2007 11:09:57

Date: 11 July 2007 14:47:03

SOP Analysis: 3.0

SOP Fill Holes: True

SOP Segmentation: None

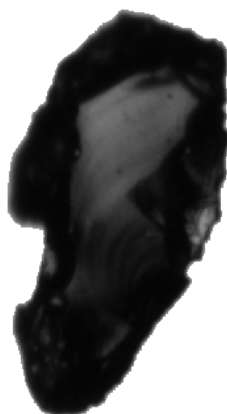
SOP Trash Size: 10

SOP Optic(s) used: 2.5x, 10x

Classification: 200 - 400, Sorted by CE Diameter ( $\mu\text{m}$ ), Descending



373.70



373.48



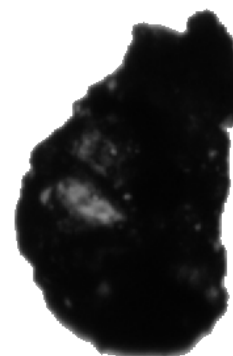
366.44



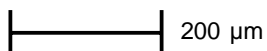
366.13



356.94



354.83



Scale 1:100

Comments: 75 - 300um fraction dispersed at 3 Bar on SPD-1300  
2.5x and 10x objective scan

# Particle Report

Sample Name: NU-LHT-1M 026 75-300um >100 pixels

SOP Name: NASA 2.5x10x Merged.vsop

Edited: True

User Name: apps

Edited On: 12 July 2007 11:09:57

Date: 11 July 2007 14:47:03

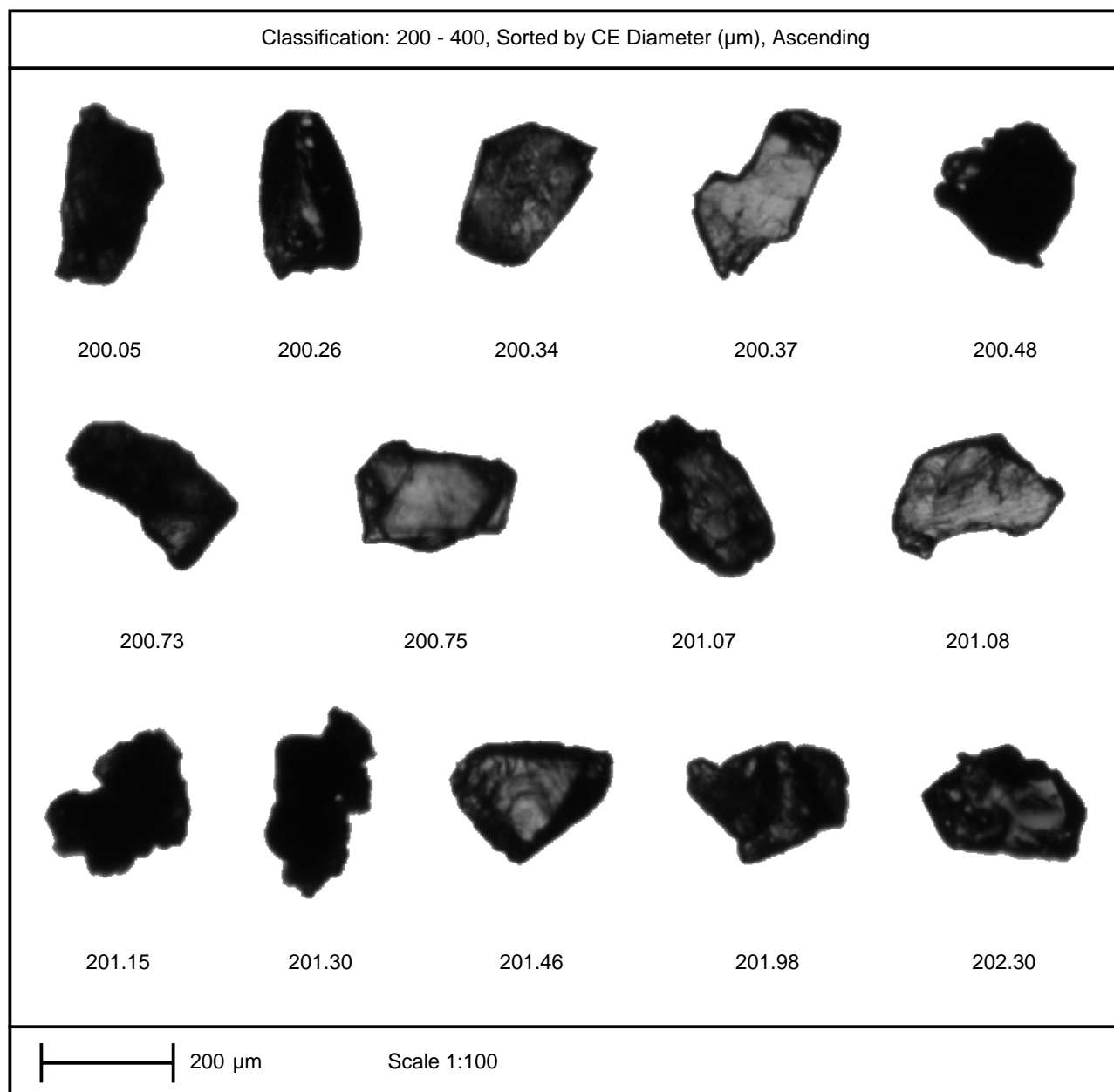
SOP Analysis: 3.0

SOP Fill Holes: True

SOP Segmentation: None

SOP Trash Size: 10

SOP Optic(s) used: 2.5x, 10x



Comments: 75 - 300um fraction dispersed at 3 Bar on SPD-1300  
2.5x and 10x objective scan

# Particle Report

**Sample Name:** NU-LHT-1M 026 75-300um >100 pixels

**SOP Name:** NASA 2.5x10x Merged.vsop

**Edited:** True

**User Name:** apps

**Edited On:** 12 July 2007 10:08:19

**Date:** 11 July 2007 14:47:03

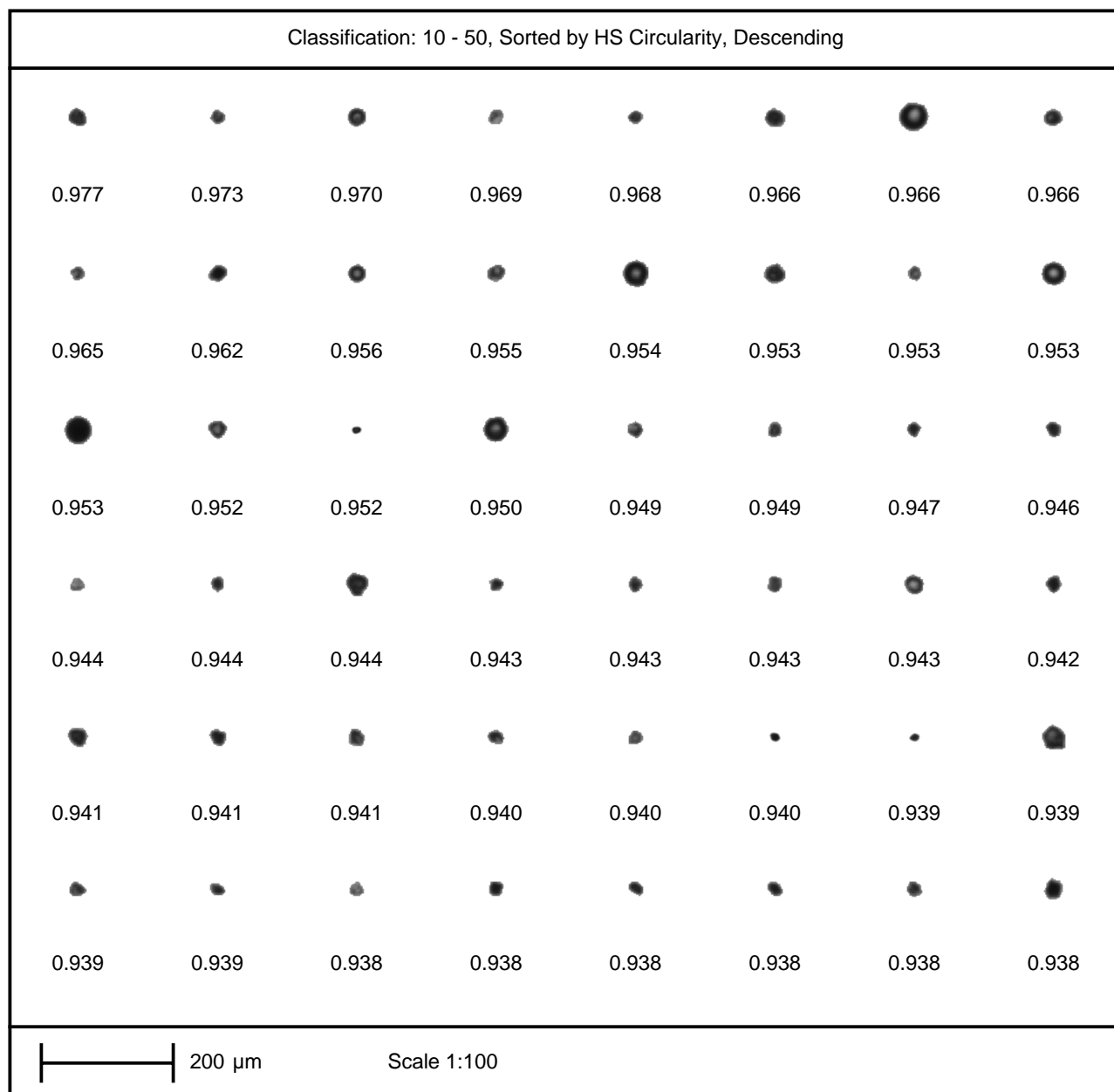
**SOP Analysis:** 3.0

**SOP Fill Holes:** True

**SOP Segmentation:** None

**SOP Trash Size:** 10

**SOP Optic(s) used:** 2.5x, 10x



**Comments:** 75 - 300um fraction dispersed at 3 Bar on SPD-1300  
2.5x and 10x objective scan

# Particle Report

**Sample Name:** NU-LHT-1M 026 75-300um >100 pixels

**SOP Name:** NASA 2.5x10x Merged.vsop

**Edited:** True

**User Name:** apps

**Edited On:** 12 July 2007 10:08:19

**Date:** 11 July 2007 14:47:03

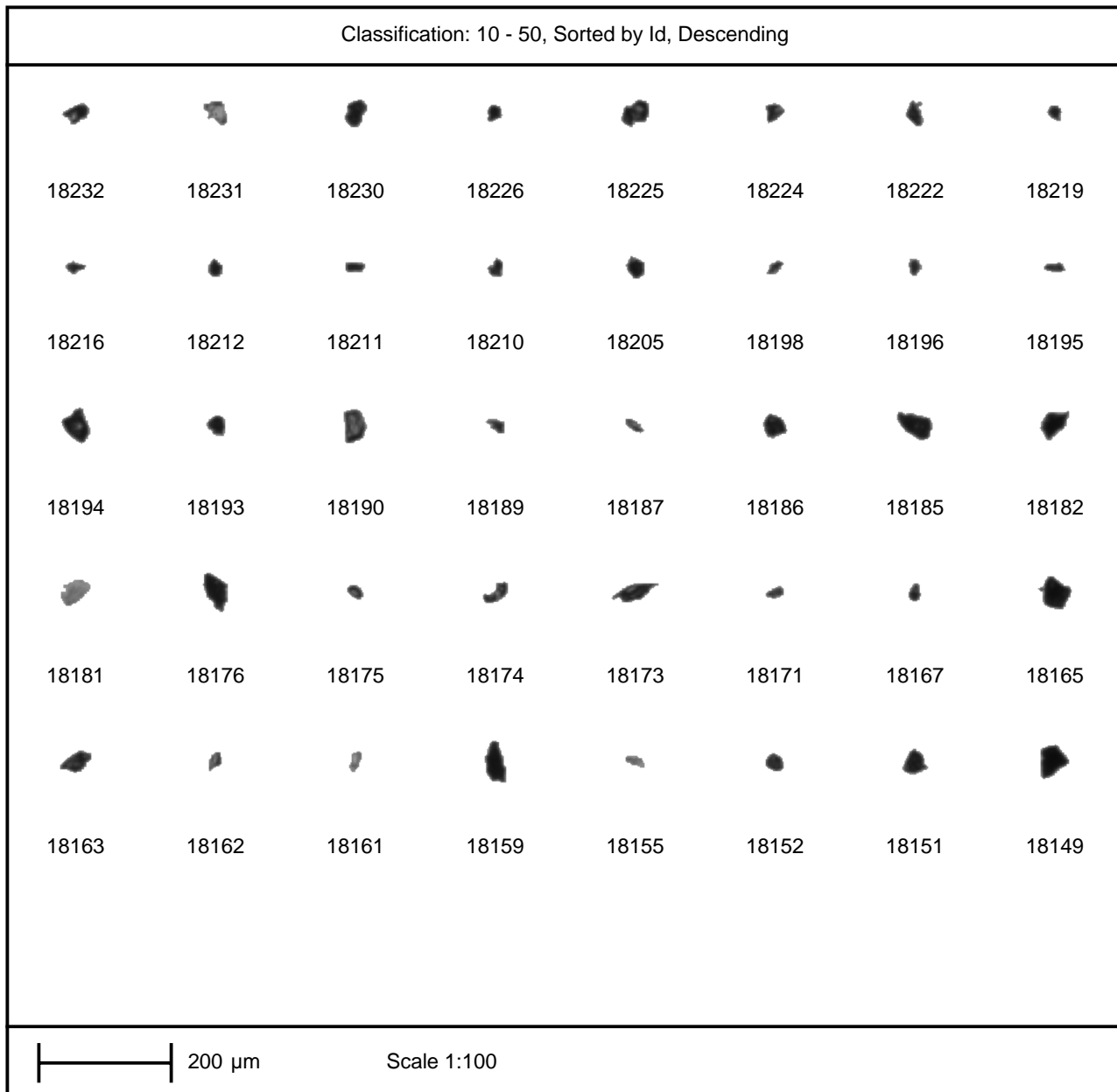
**SOP Analysis:** 3.0

**SOP Fill Holes:** True

**SOP Segmentation:** None

**SOP Trash Size:** 10

**SOP Optic(s) used:** 2.5x, 10x



**Comments:** 75 - 300um fraction dispersed at 3 Bar on SPD-1300  
2.5x and 10x objective scan



# Particle Report

**Sample Name:** NU-LHT-1M 026 75-300um >100 pixels

**SOP Name:** NASA 2.5x10x Merged.vsop

**Edited:** True

**User Name:** apps

**Edited On:** 12 July 2007 10:08:19

**Date:** 11 July 2007 14:47:03

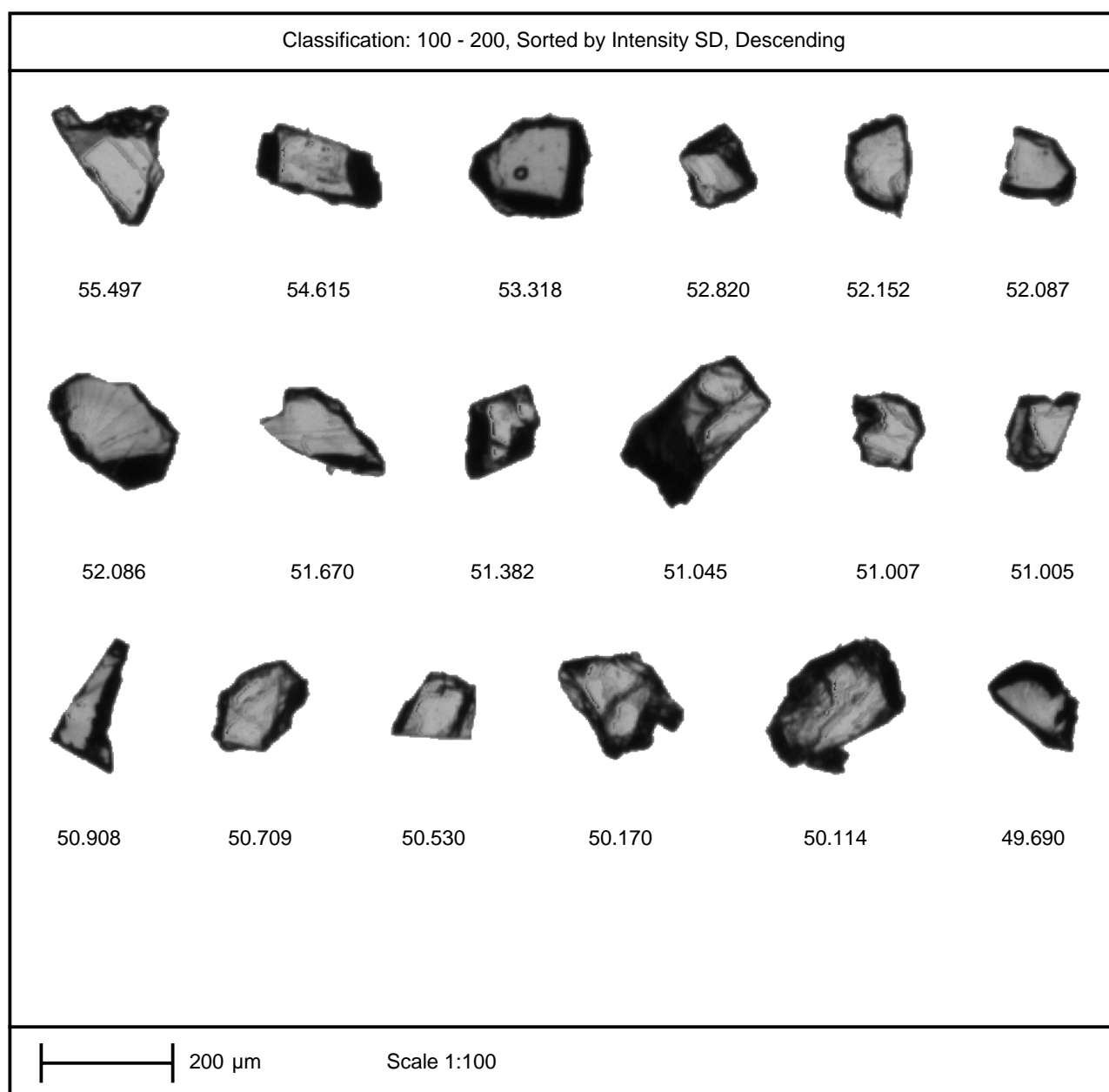
**SOP Analysis:** 3.0

**SOP Fill Holes:** True

**SOP Segmentation:** None

**SOP Trash Size:** 10

**SOP Optic(s) used:** 2.5x, 10x



**Comments:** 75 - 300um fraction dispersed at 3 Bar on SPD-1300  
2.5x and 10x objective scan

# Particle Report

**Sample Name:** NU-LHT-1M 026 75-300um >100 pixels

**SOP Name:** NASA 2.5x10x Merged.vsop

**Edited:** True

**User Name:** apps

**Edited On:** 12 July 2007 10:08:19

**Date:** 11 July 2007 14:47:03

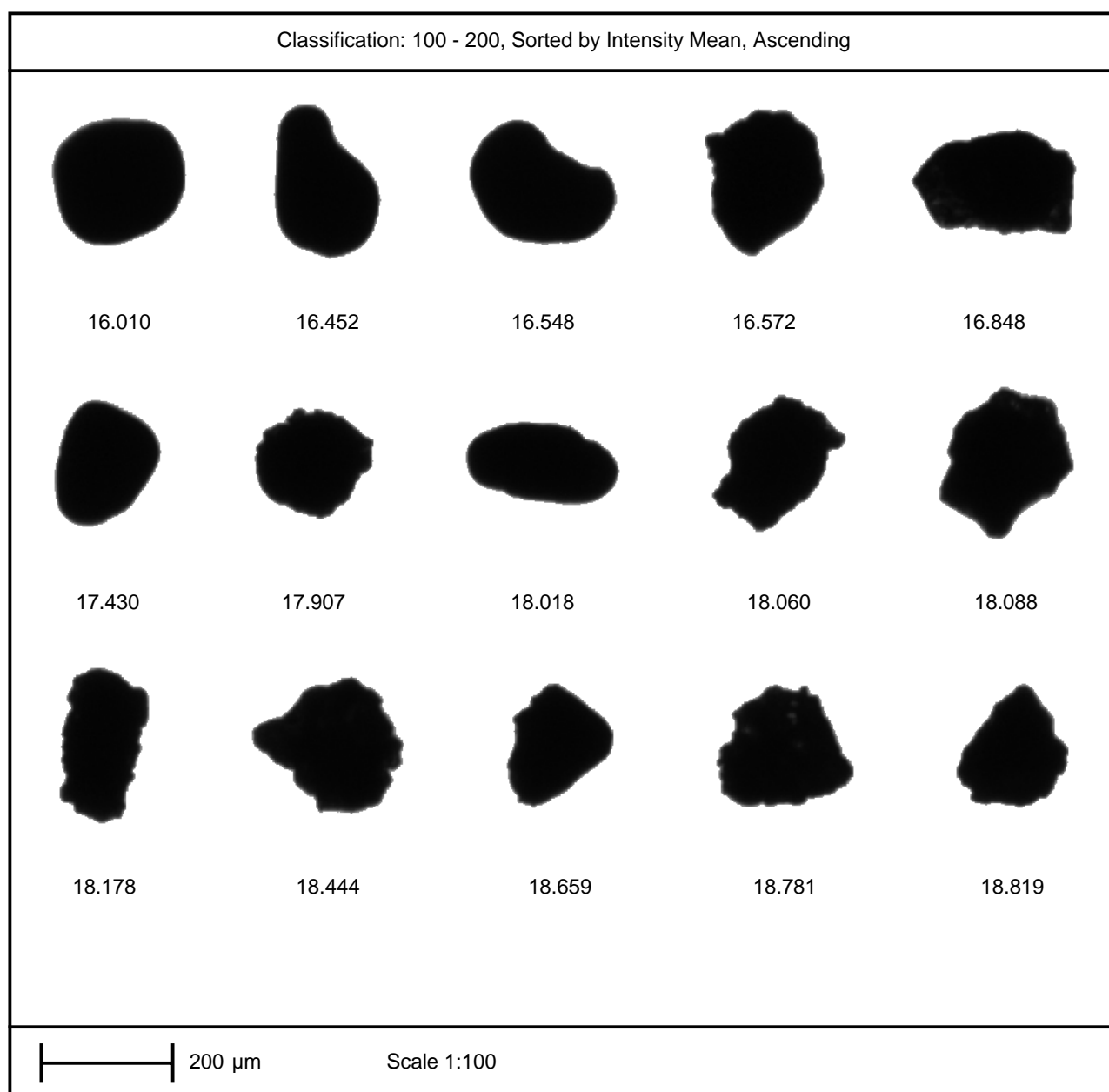
**SOP Analysis:** 3.0

**SOP Fill Holes:** True

**SOP Segmentation:** None

**SOP Trash Size:** 10

**SOP Optic(s) used:** 2.5x, 10x



**Comments:** 75 - 300um fraction dispersed at 3 Bar on SPD-1300  
2.5x and 10x objective scan

# Particle Report

**Sample Name:** NU-LHT-1M 026 75-300um >100 pixels

**SOP Name:** NASA 2.5x10x Merged.vsop

**Edited:** True

**User Name:** apps

**Edited On:** 12 July 2007 10:08:19

**Date:** 11 July 2007 14:47:03

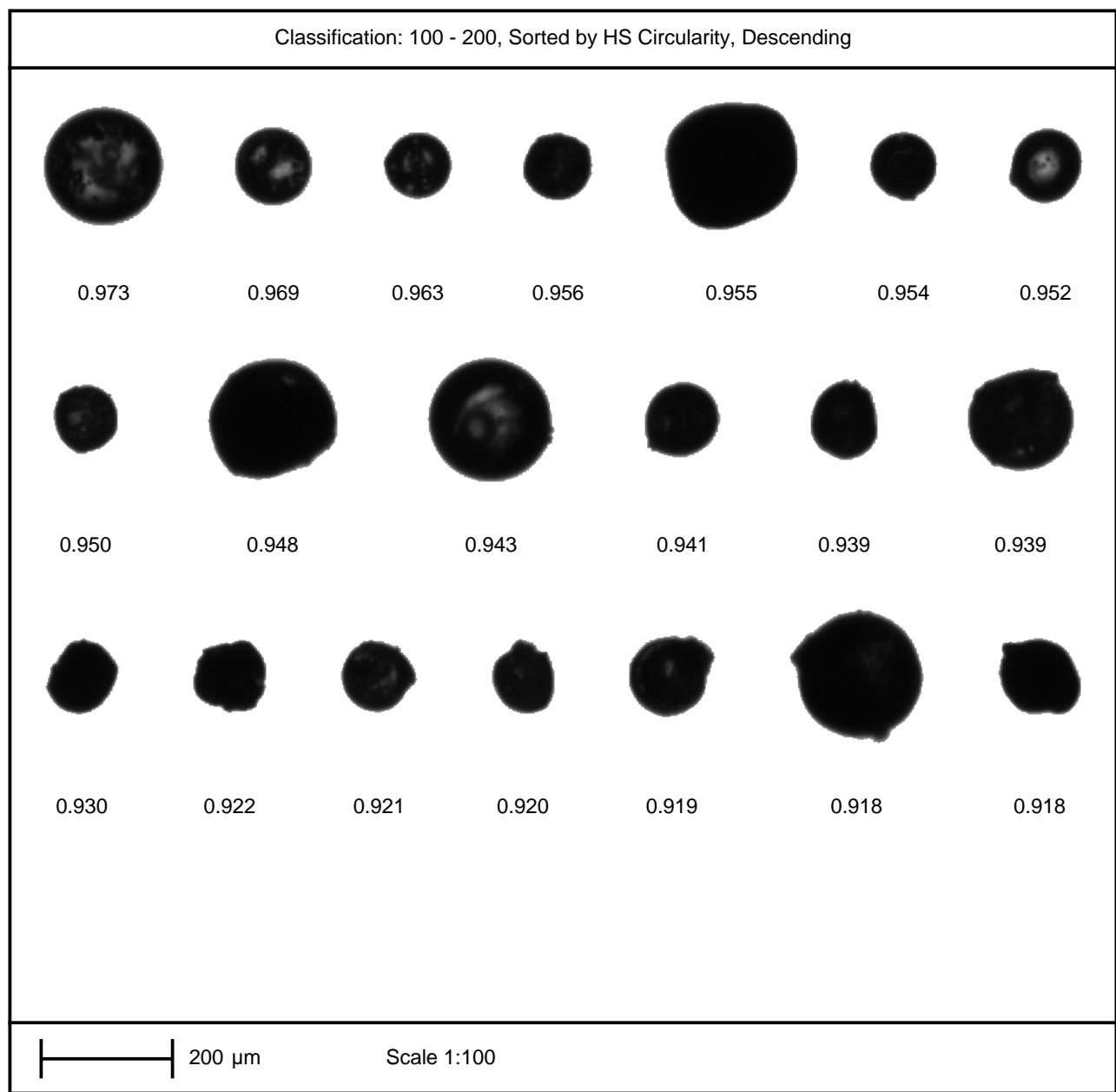
**SOP Analysis:** 3.0

**SOP Fill Holes:** True

**SOP Segmentation:** None

**SOP Trash Size:** 10

**SOP Optic(s) used:** 2.5x, 10x



**Comments:** 75 - 300um fraction dispersed at 3 Bar on SPD-1300  
2.5x and 10x objective scan

# Particle Report

**Sample Name:** NU-LHT-1M 026 75-300um >100 pixels

**SOP Name:** NASA 2.5x10x Merged.vsop

**Edited:** True

**User Name:** apps

**Edited On:** 12 July 2007 11:09:57

**Date:** 11 July 2007 14:47:03

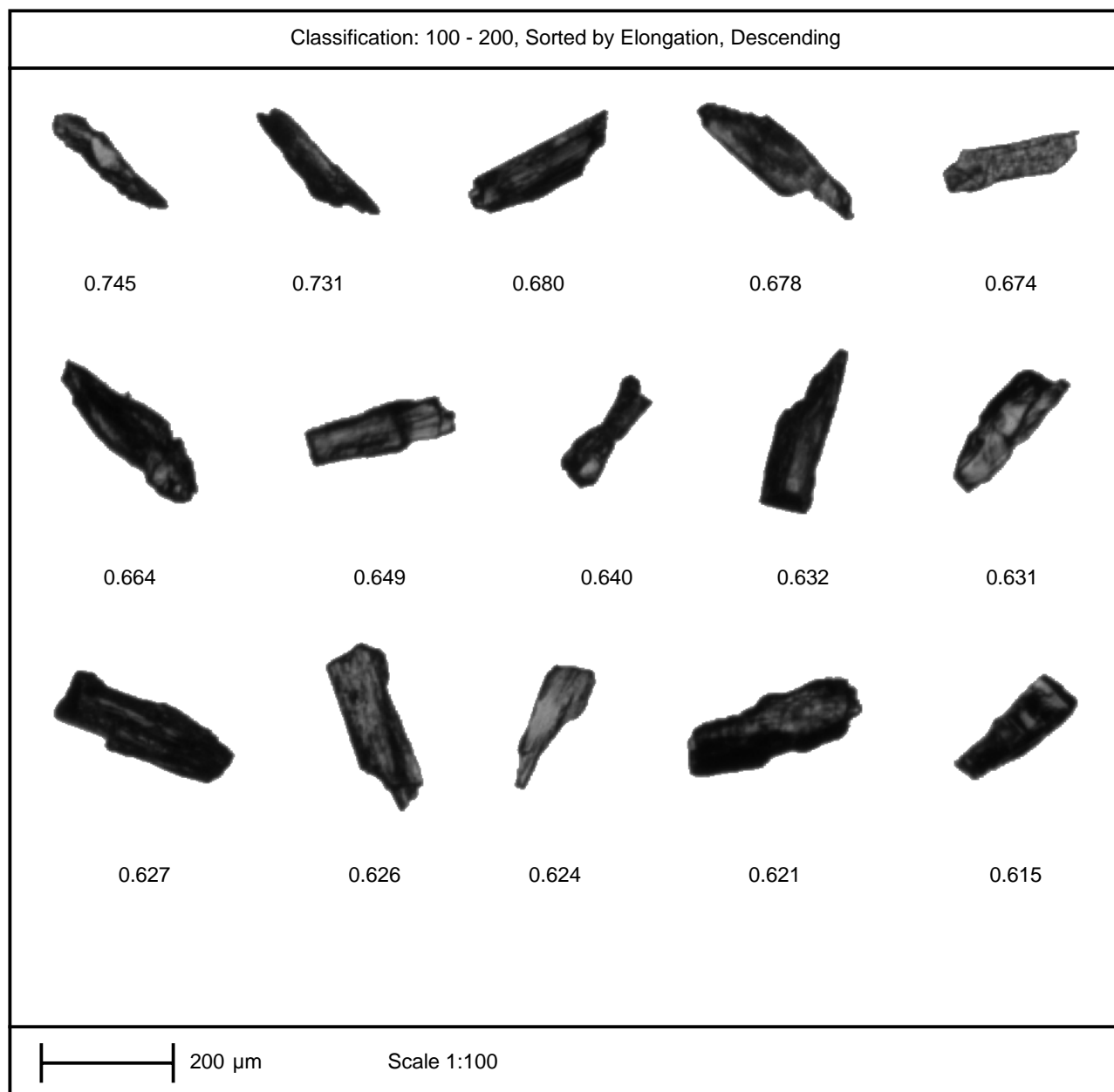
**SOP Analysis:** 3.0

**SOP Fill Holes:** True

**SOP Segmentation:** None

**SOP Trash Size:** 10

**SOP Optic(s) used:** 2.5x, 10x



**Comments:** 75 - 300um fraction dispersed at 3 Bar on SPD-1300  
2.5x and 10x objective scan